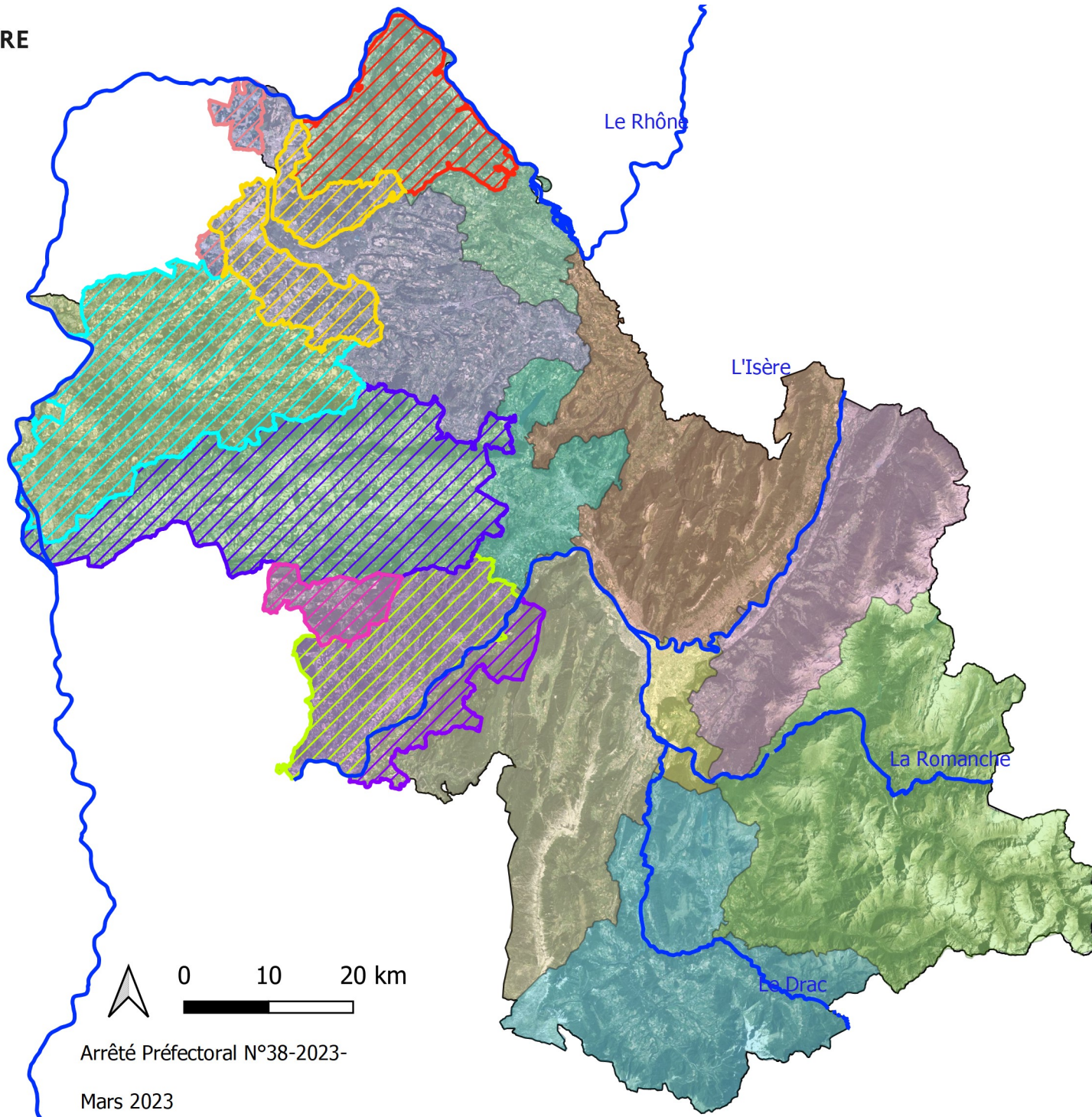


# Annexe 2 - Cartographie des zones d'alerte -











## Zones d'Alerte

### ZA spécifiques Grands Cours d'Eau

— GCE\_84\_38

### ZA spécifiques souterraines

-  Bièvre-Liers-Valloire (spé sout.)
-  Bourbre (spé sout.)
-  Isle Crémieu (spé sout.)
-  Molasse Miocène Bas Dauphiné
-  Nappes de Chambaran
-  Nappes de l'Est Lyonnais
-  Sanne-Varèze-4 Vallées (spé sout.)
-  Terrasses de l'Isère rive gauche

### ZA générales

-  Agglomération Grenobloise
-  Belledonne
-  Bièvre-Liers-Valloire
-  Bourbre
-  Chambaran
-  Chartreuse-Guiers
-  Est-Lyonnais
-  Galaure-Drôme des Collines
-  Isle Crémieu
-  Oisans/Bonne
-  Paladru-Fure
-  Sanne-Varèze-4 Vallées
-  Trièves/Matheysine
-  Vercors

Arrêté Préfectoral N°38-2023-

Mars 2023