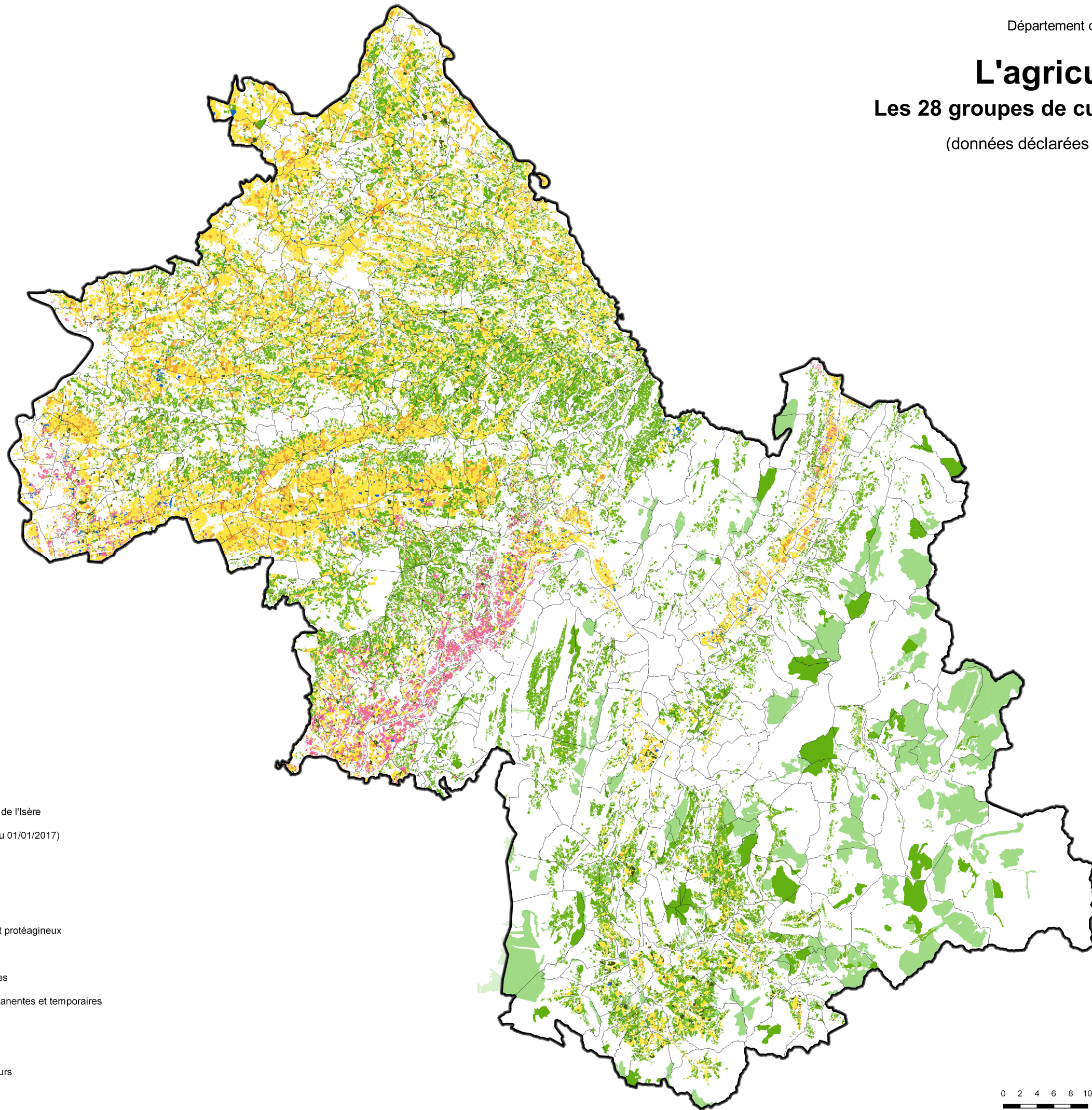




L'agriculture





Les 28 groupes de cultures dominants

(données déclarées à la PAC 2016)



 Département de l'Isère
 Commune (au 01/01/2017)

Type de culture

-  Céréales
-  Oléagineux et protéagineux
-  Semences
-  Estives, landes
-  Prairies permanentes et temporaires
-  Fourrage
-  Arboriculture
-  Légumes, fleurs



0 2 4 6 8 10 km

